

公益金 賣旗日

THE COMMUNITY CHEST FLAG DAY

16/11 2024
星期六 SAT



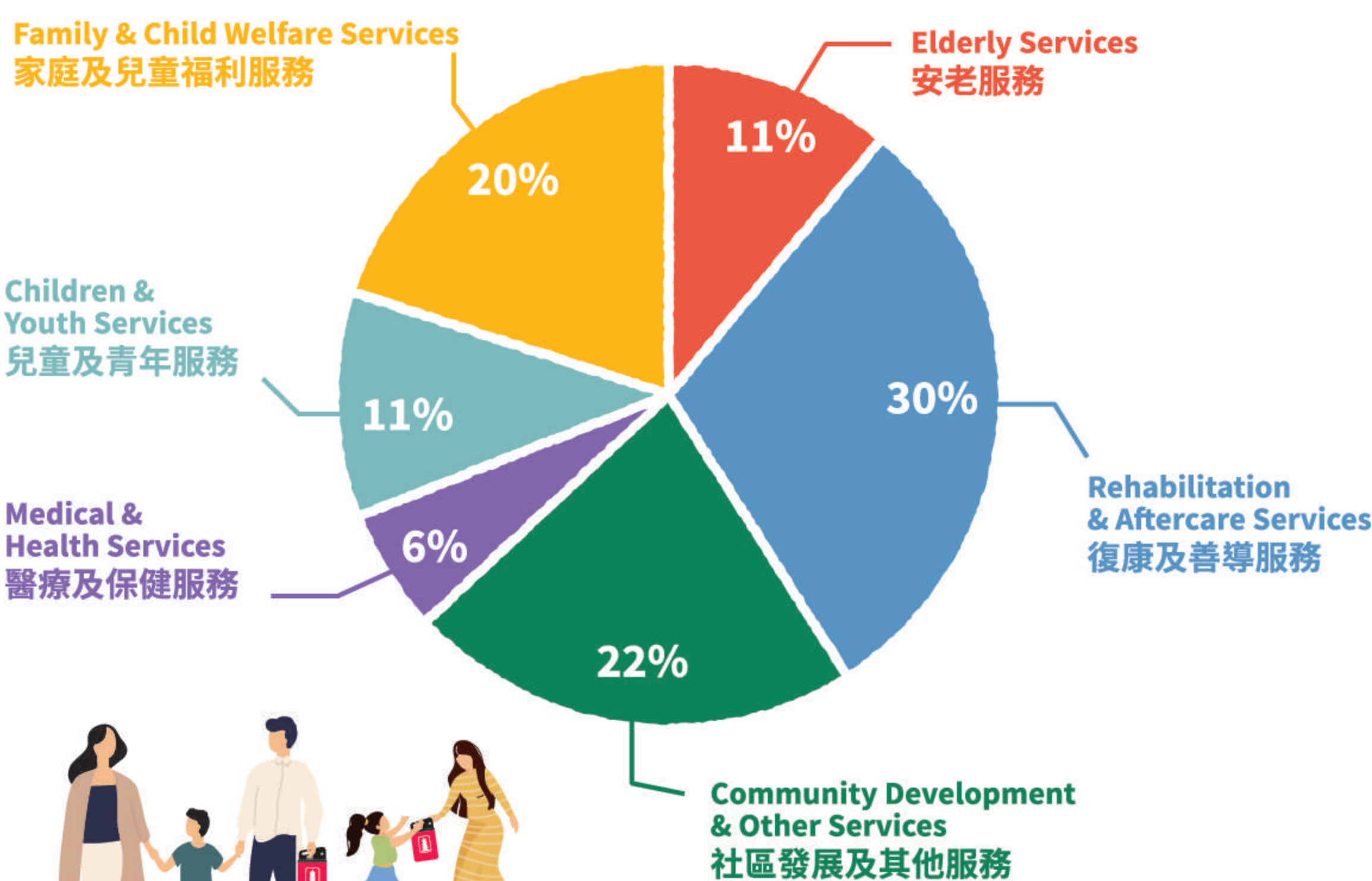
感謝您的支持，謹附上金旗一枚，以茲紀念。
A Gold Flag is attached as a token of appreciation for your support.

公益金一直堅守對香港社會的承諾，將籌得的善款，不扣除任何行政開支，全數用於提升本地社會福利工作。「賣旗日」所籌得之善款，將會百分之一百撥捐一百六十七間社會福利會員機構，以資助六項主要服務，包括兒童及青年服務、安老服務、家庭及兒童福利服務、醫療及保健服務、復康及善導服務及社區發展及其他服務，惠澤超過三百五十萬名香港有需要人次。

The Community Chest has firmly adhered to its motto to allocate all funds raised to support local social welfare services without any deductions. All donations raised from “Flag Day” will be allocated to the Chest’s 167 social welfare member agencies for providing Children & Youth Services, Elderly Services, Family & Child Welfare Services, Medical & Health Services, Rehabilitation & Aftercare Services and Community Development & Other Services to enhance services for over 3.5 million service attendances in Hong Kong.

2024/2025年度公益金資助的福利服務及計劃

Services and Projects Supported by The Community Chest in 2024/2025



您的支持，甚為重要 Your Support Does Mean a Lot

您的善款可以幫助有需要的人士
Your donation can help the needy

\$100 ▶ 可提供一節日間照顧服務予一名長者
To provide a session of day care service for an elder

\$200 ▶ 可為一名肺積塵病人提供一次復康運動訓練
To provide a pneumoconiosis patient with a rehabilitation exercise session

\$500 ▶ 可為一名居住於院舍的長者提供職業治療服務
To provide occupational therapy for an elder living in the care home

\$700 ▶ 可透過一節社區為本復康訓練改變一名傷殘人士的身體機能
To improve the physical functioning of a disabled person through a session of community-based rehabilitation training activity



交付善款辦法

Payment Methods

- 抬頭「香港公益金」之劃線支票。
Donation by crossed cheque made payable to “The Community Chest of Hong Kong”.
- 將款項存入其中一個戶口：
Deposit donation into one of the Chest’s accounts:

中國銀行(香港)
Bank of China (Hong Kong)
031-349-0-024366-6

東亞銀行
The Bank of East Asia, Limited
015-514-10-24793-5

恒生銀行
Hang Seng Bank
367-6-004678

- 網上捐款
Online Donation

透過以下學校專屬捐款二維碼或網址填妥網上表格並進行捐款，支付方式包括
Make online donation through the School’s designated QR code or link below.
Online payment methods include:

陳樹渠紀念中學
Chan Shu Kui Memorial School



- 信用卡 Visa, MasterCard
- BoC Pay, UnionPay QR code
- 支付寶香港 AlipayHK
- 微信支付 WeChat Pay HK
- 轉數快 FPS
- PayMe

<https://www.commchest.org/donation/flagday/24GF009.html>

請按校方指示將善款支票、銀行入數紙或網上捐款截圖交回學校，由學校一併交回公益金。凡捐款港幣一百元或以上，稍後可獲公益金發出正式收據。
Please return the donation cheques, bank-in slips or online donation screenshots to your school according to the school’s instructions. Official receipts will be issued for donations of HK\$100 or above.

主辦機構 Organiser



慈善夥伴
Partner in charity



香港賽馬會
The Hong Kong Jockey Club

香港公益金有賴慈善夥伴——香港賽馬會的慷慨資助，得以將全數善款，不扣除任何行政開支，100%撥捐167間社會福利會員機構，惠澤社群。

The Community Chest of Hong Kong is grateful for the generosity of its partner-in-charity, The Hong Kong Jockey Club, which makes possible the allocation of 100% of the donations to 167 social welfare member agencies – without deduction of administrative costs – to benefit millions in Hong Kong every year.

電話 Telephone : 2599 6111
傳真 Fax : 2506 1201

電子郵件 Email : flagday@commchest.org
網址 Website : <http://www.commchest.org>